



*For its 30<sup>th</sup> anniversary, bam shows its creativity more than ever, by launching a new range of accessories for musicians...*

Not only is it a brand new logo and a definitely modern design, it is also a whole array of new products and accessories, designed to make the musician's life easier, and to show them that their luthier is concerned about their comfort. No need to run to different places to find accessories anymore...

Starting from our anniversary date: April 1<sup>st</sup>, you will find silk pouches, travel briefcases, cleaning cloths, carrying bags especially designed for musicians, and many more innovative items on our website [www.bamaccessories.com](http://www.bamaccessories.com)

*Become a privileged client of the online bam l'original boutique exclusively reserved for you, and receive your special anniversary surprise gift!*

*... or come and visit us at the bam's booths during*

**Musikmesse**, from March 24 to 27, in Frankfurt, Germany.  
**Strings and office:** Hall 1.2 A01  
**Winds and exhibition:** Hall 1.1 B16

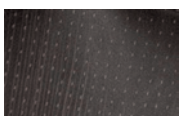
The whole **bam** team will be happy to welcome you !

**Two new patterns for bam's 30th Anniversary!**

The Oblong and Contoured Hightech for Violin and for Viola, the 3.5 «Compact» Cello case, the Hightech for Guitars and for two Violins indulge themselves with two new aspects!

Black Lazure

Silver Carbon



*By introducing new colors and patterns, bam attempts to draw musicians to their luthier or music store and get them excited with our new high performance cases!*

**A New HIGHTECH model with fabric cover: The «Lotus»...**

For Violin - Ref.: 2010 LH  
 For Viola - Ref.: 2210 LH - «Adjustable»

All the qualities of the Hightech technique associated with the elegance of a cover.

Very rigid – Light – Airtight – Shock absorbing – Durable.

Suspension of the instrument on injected foam.

Large sheet music pocket – 4 bow holders.

Weight: 2.5 kg/5.5 lbs

Colors: *Tartan (Grey-green and Black)*

*Bayadere (Beige and black)*



**Some color for the «Slim» range...**

The Slim Violin case, the Overhead Violin case and the 2.9 «Slim» Cello case become colorful...

Colors: *White, Orangey, Olive, and soon to come... Navy Blue (in May! Book yours now)*



**... and for the Oblong and Contoured too!**

Violins and Violas now have their own spring-like colors too! *Azure and Anise*



**The smaller violins smartened up! The ¾ - ½ «Classic» updated!**

Ref. 2003S  
 Inside cradle made of polyurethane foam

- Large sheet music pocket
- Removable accessory pouches
- 1 bow holder
- Removable backpack straps.

Colors: *Blue and Black, Grey and Black*



**The Classic case for Cello offers its 4 colors and its very reasonable price! ... A bam for tighter budgets**

Ref.: 1001S/1001SW

Thermoformed in an extremely strong – 8 soft-touch latches – Total suspension of the instrument on injected foam cushions – Sheet music pocket – 2 comfortable neoprene anti-slip backpack straps with security screw hooks.

Weight : 5,4 kg without wheels - 5,7 kg with wheels and pulling handle.

**Finally, its «graffiti» design logo gives a modern and stylish touch, while certifying its origin.**



Colors: *Black, Silver, Emerald blue, Peony red*

**Oblong Stylus for Viola: streamlined and light...**

*You know the recently lightened Oblong Stylus for Violin.*

**Now comes the Viola version!**

For Viola 40cm / 15" ¾ – Ref.: 5140 S

For Viola 41.5cm / 16" – Ref.: 5141 S

Inside cradle made of injected polyurethane foam – Fully reinforced lid – Zipper with combination lock for the zipper pulls – Large sheet music pocket – 4 bow holders – 2 removable and adjustable backpack straps with pad.

Weight: 2.9 kg / 6.4 lbs

Colors: *Black and silver, bordeaux and silver, grey and silver.*

bam  
l'original  
**30ans**

*For its 30th anniversary, bam shows its creativity more than ever, by launching a new range of accessories for musicians...*

Not only is it a brand new logo and a definitely modern design, it is also a whole array of new products and accessories, designed to make the musician's life easier, and to show them that their luthier is concerned about their comfort. No need to run to different places to find accessories anymore...

Starting from our anniversary date : April 1st, you will find silk pouches, travel brief-cases, cleaning cloths, carrying bags especially designed for musicians, and many more innovative items on our website [www.bamaccessories.com](http://www.bamaccessories.com)

Become a privileged client of the online **bam l'original** boutique exclusively reserved for you, and receive your special anniversary surprise gift!

... or come and visit us at the **bam's** booths during **Musikmesse**, from March 24 to 27, in Frankfurt, Germany.

**Strings and office : Hall 1.2 A01**  
**Winds and exhibition : Hall 1.1 B16**

The whole **bam** team will be happy to welcome you !

*... New cases have been added to bam's catalog to expand the line with items that will make traveling easier.*

### The very compact design of the Cabin model for Saxophone

For Alto Saxophone – ref. 4011S  
For Tenor Saxophone – ref. 4012S

Thermoformed in an extremely strong  
• Inside cradle made of injected foam  
• «Graffiti» design logo

Colors : *Black, Silver, Emerald blue, Peony red*



### Traveler Cases

#### The compact case with «luggage» extension

All the qualities of the Hightech technique associated with the elegance of a cover.

- Very rigid
- Light
- Airtight
- Shock absorbing
- Durable.
- Suspension of the instrument in an injected foam cradle

Color : *Silver & Black*

#### Traveler for Bb Clarinet

Ref. 3027 TH

Double expandable «luggage» back pocket featuring multiple compartments to carry sheet music, a laptop and any personal belongings (Depth : 7cm / 2.8 inches).



#### Traveler for Double Clarinet Bb & A

Ref. 3028 TH

Large back pocket for sheet music sheet music, a laptop and any personal belongings (Depth : 7cm / 2.8 inches)  
• Double expandable «luggage» pocket on top of the case featuring multiple compartments.



#### Traveler for Alto Saxophone

Ref. 4101 TH

#### Tenor Saxophone

Ref. 4102 TH

Large back pocket for sheet music and/or a laptop  
• Double expandable «luggage» pocket on top of the case featuring multiple compartments (Depth : 7cm / 2.8 inches)

